

## Three Phase Rectifier Bridges

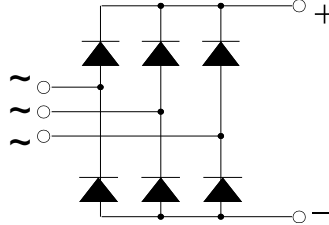
GOLD-Plated-FASTONS

## PSD 36T (PSD36, PSD36N)

$I_{dAVM} = 35 \text{ A}$   
 $V_{RRM} = 800-1800 \text{ V}$



$V_{RSM}$ V	$V_{RRM}$ V	Type
800	800	PSD 36T/08
1200	1200	PSD 36T/12
1400	1400	PSD 36T/14
1600	1600	PSD 36T/16
1800	1800	PSD 36T/18



Symbol	Test Conditions	Maximum Ratings	
$I_{dAVM}$	$T_C = 62^\circ\text{C}$ , module	35	A
$I_{dAVM}$	$T_C = 85^\circ\text{C}$ , module	27	A
$I_{FSM}$	$T_{VJ} = 45^\circ\text{C}$ $V_R = 0$	$t = 10 \text{ ms}$ (50 Hz), sine	550 A
		$t = 8.3 \text{ ms}$ (60 Hz), sine	600 A
	$T_{VJ} = T_{VJM}$ $V_R = 0$	$t = 10 \text{ ms}$ (50 Hz), sine	500 A
		$t = 8.3 \text{ ms}$ (60 Hz), sine	550 A
$\int i^2 dt$	$T_{VJ} = 45^\circ\text{C}$ $V_R = 0$	$t = 10 \text{ ms}$ (50 Hz), sine	1520 $\text{A}^2 \text{ s}$
		$t = 8.3 \text{ ms}$ (60 Hz), sine	1520 $\text{A}^2 \text{ s}$
	$T_{VJ} = T_{VJM}$ $V_R = 0$	$t = 10 \text{ ms}$ (50 Hz), sine	1250 $\text{A}^2 \text{ s}$
		$t = 8.3 \text{ ms}$ (60 Hz), sine	1250 $\text{A}^2 \text{ s}$
$T_{VJ}$		-40 ... + 150	$^\circ\text{C}$
$T_{VJM}$		150	$^\circ\text{C}$
$T_{stg}$		-40 ... + 150	$^\circ\text{C}$
$V_{ISOL}$	50/60 HZ, RMS	$t = 1 \text{ min}$	2500 V ~
	$I_{ISOL} \leq 1 \text{ mA}$	$t = 1 \text{ s}$	3000 V ~
$M_d$	Mounting torque (M5) (10-32 UNF)		$2 \pm 10\%$ Nm
			$18 \pm 10\%$ lb. in
Weight	typ.		22 g

Symbol	Test Conditions	Characteristic Value	
$I_R$	$V_R = V_{RRM}$	$T_{VJ} = 25^\circ\text{C}$	$\leq 0.3 \text{ mA}$
	$V_R = V_{RRM}$	$T_{VJ} = T_{VJM}$	$\leq 2.0 \text{ mA}$
$V_F$	$I_F = 150 \text{ A}$	$T_{VJ} = 25^\circ\text{C}$	$\leq 1.7 \text{ V}$
$V_{TO}$	For power-loss calculations only		0.8 V
$r_T$	$T_{VJ} = T_{VJM}$		7.4 $\text{m}\Omega$
$R_{thJC}$	per diode; DC current		7.5 K/W
	per module		1.25 K/W
$R_{thJH}$	per diode; DC current		8.4 K/W
	per module		1.4 K/W
$d_S$	Creeping distance on surface		12.7 mm
$d_A$	Creeping distance in air		9.4 mm
$a$	Max. allowable acceleration		50 $\text{m/s}^2$

### Features

- Package with 1/4" fast-on terminals
- Isolation voltage 3000 V~
- Planar glasspassivated chips
- Blocking voltage up to 1800 V
- Low forward voltage drop
- UL registered E 148688

### Applications

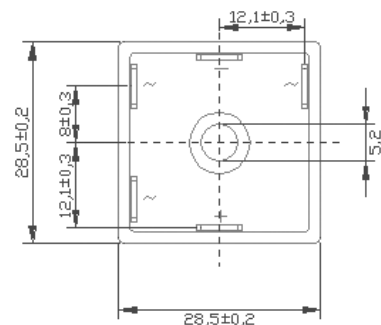
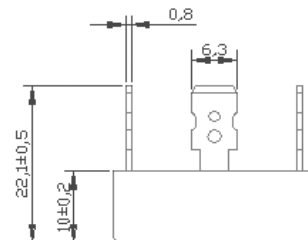
- Supplies for DC power equipment
- Input rectifiers for PWM inverter
- Battery DC power supplies
- Field supply for DC motors

### Advantages

- Easy to mount with one screw
- Space and weight savings
- Improved temperature and power cycling capability

### Package, style and outline

Dimensions in mm (1mm = 0.0394")



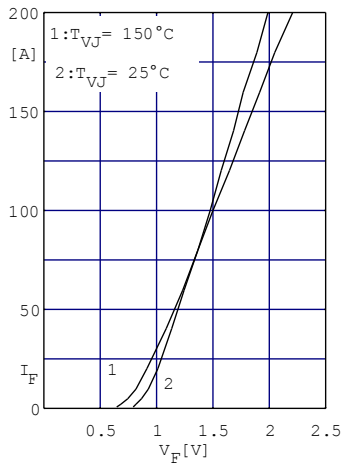


Fig. 1 Forward current versus voltage drop per diode

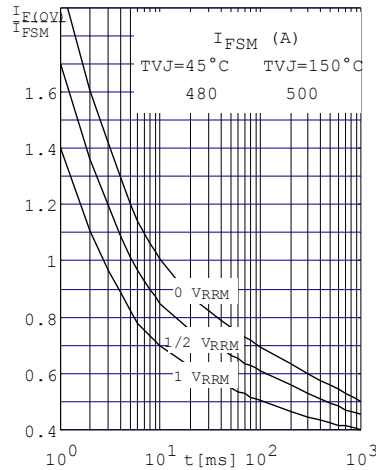


Fig. 2 Surge overload current per diode  $I_{FSM}$ : Crest value. t: duration

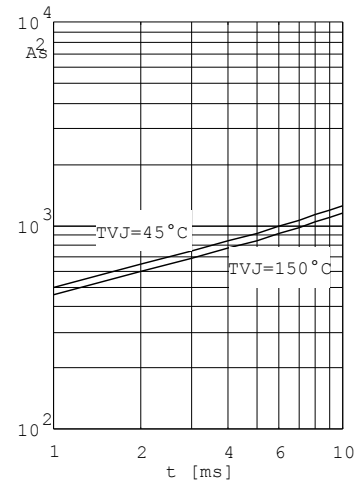


Fig. 3  $\int i^2 dt$  versus time (1-10ms) per diode (or thyristor)

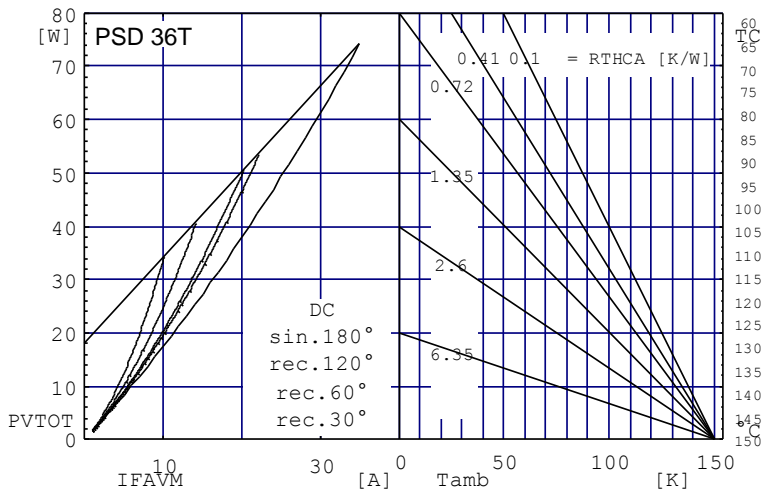


Fig. 4 Power dissipation versus direct output current and ambient temperature

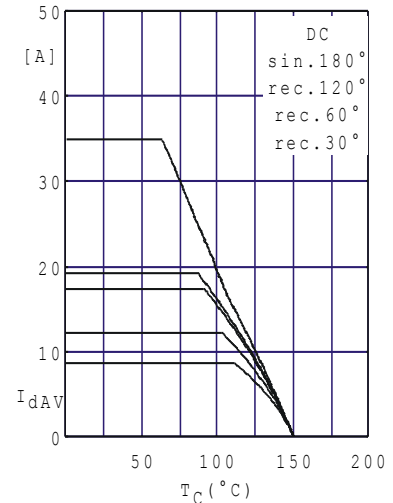


Fig.5 Maximum forward current at case temperature

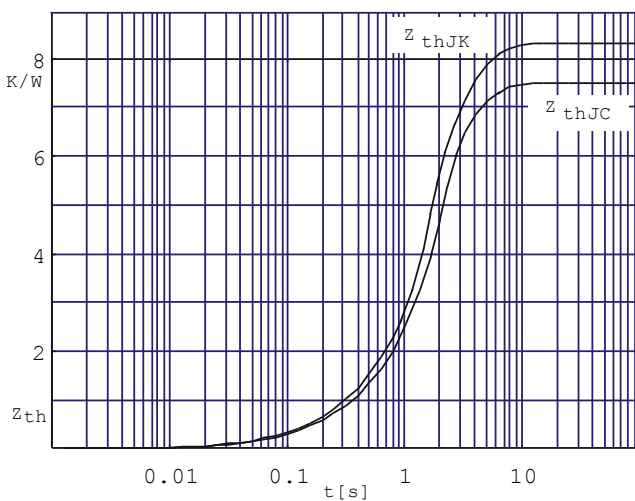


Fig. 6 Transient thermal impedance per diode (or thyristor), calculated